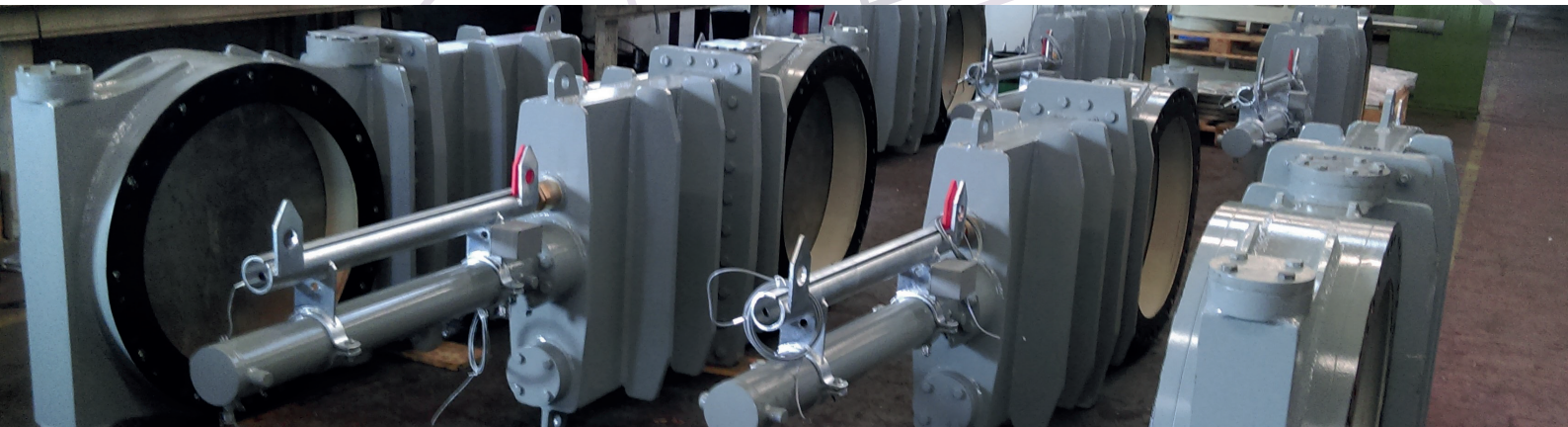


REGULATING VALVES

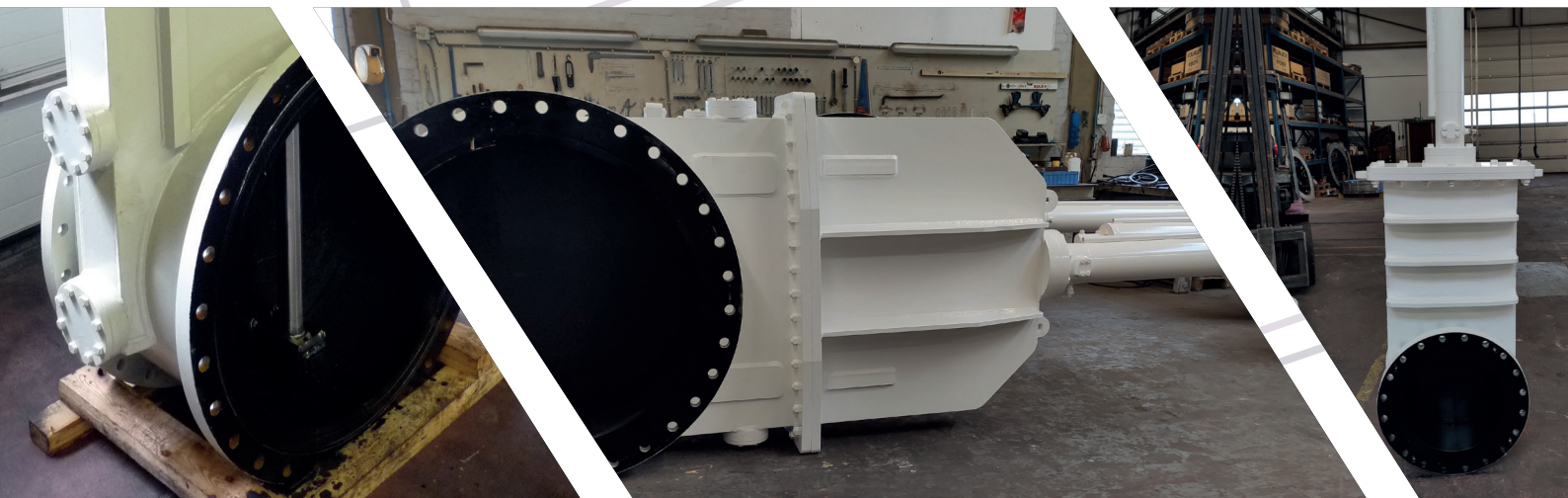


Our regulating valves are used on dredgers. The gate can be controlled in such a way that the flow can be regulated. By controlling the flow the dredging process is optimized.

Our standard regulating valves are equipped with gates and linings that are made of wear-resistant steel or wear-resistant white cast iron.

The entire production of our dredge valves, from design to finished product, takes place at our own facility. All different types are engineered using FEM strength calculations. Customized executions (i.e. reduced height, side-mounted cylinders) are our specialty.

Inspection or certification by a notified body is possible upon request.



SPECIFICATIONS

- Inner diameters range from 150 to 1400 mm
- Pressures of up to 60 bar
- Electrical open or closed indication
- Electrical or mechanical linear indication
- Electrical or hydraulic gate operation
- Threaded or bolted flange connection



WANT TO KNOW MORE?

Feel free to contact me anytime.

✉ ktanis@matecs.nl

☎ +31(0)6 533 580 00



Matecs BV
Schotsbossenstraat 16
4705 AG Roosendaal
The Netherlands
+31 (0)165 581 840
sales@matecs.nl
www.matecs.nl

matecs.nl